

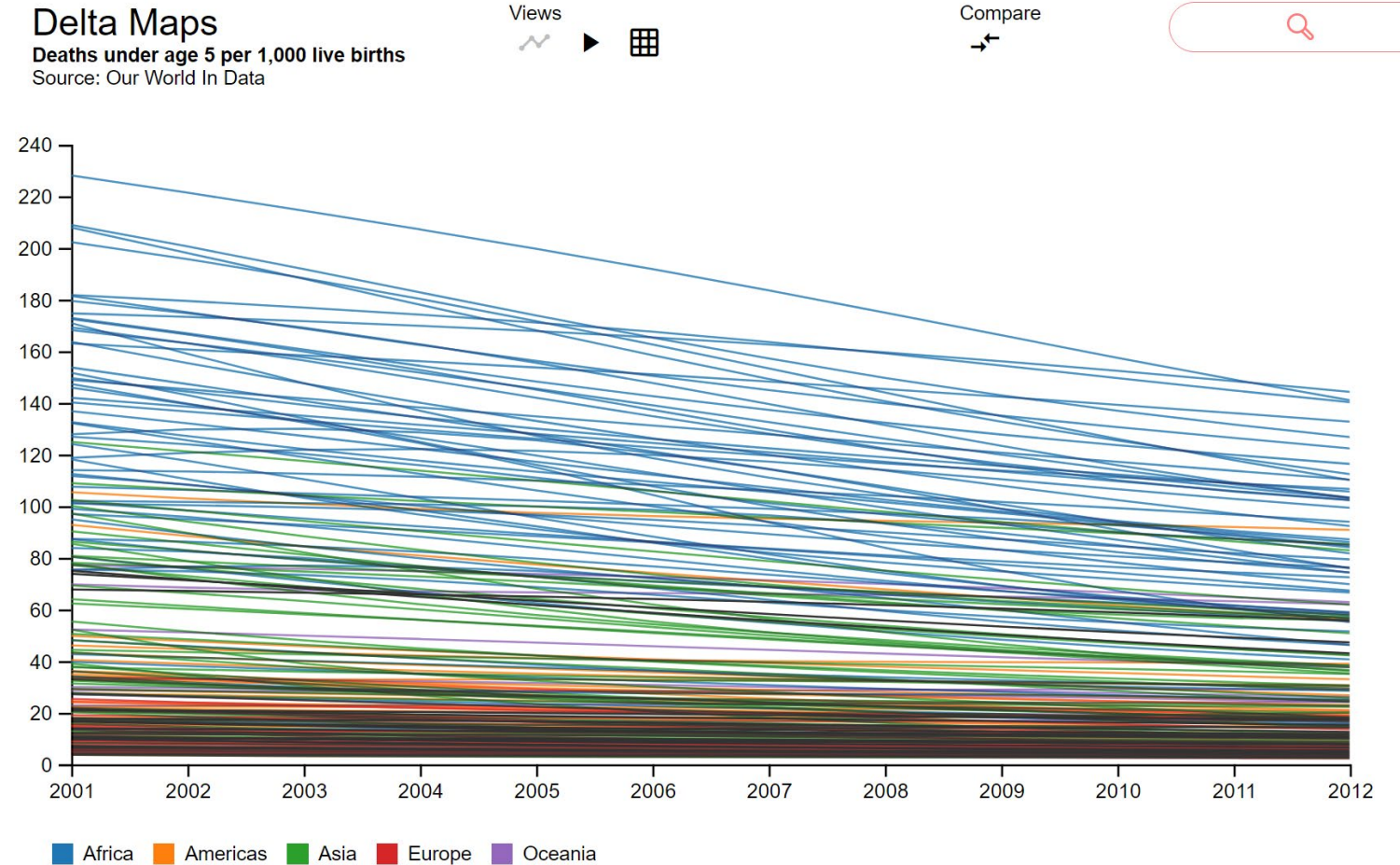
# WIMP interface

(input modalities: mouse and keyboard)

Introduction of the features

# Multiple views

1. Multi-line chart
2. Animated map
3. Small multiples
4. Detail view
5. Comparison view



# Multi-line chart

Delta Maps  
Deaths under age 5 per 1,000 live births  
Source: Our World In Data

Views

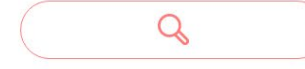


Go to one of the first 3 views from the header

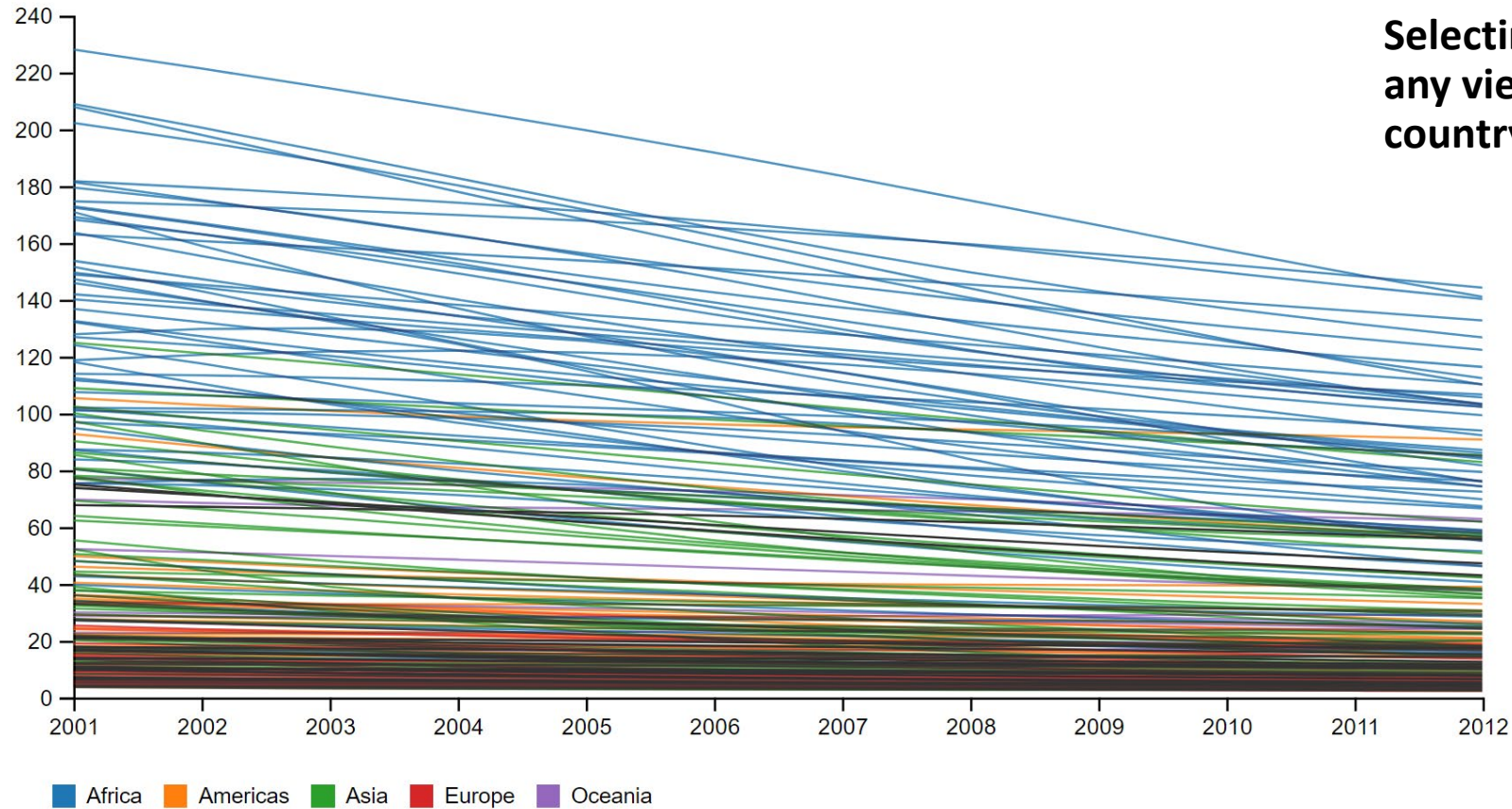
Compare



Select countries for the country list



The detail view and the comparison view are only accessible from the small multiples



Selecting a country in any view will select that country in all views

# Multi-line chart

WIMP interface

Deaths under age 5 per 1,000 live births  
Source: Our World In Data

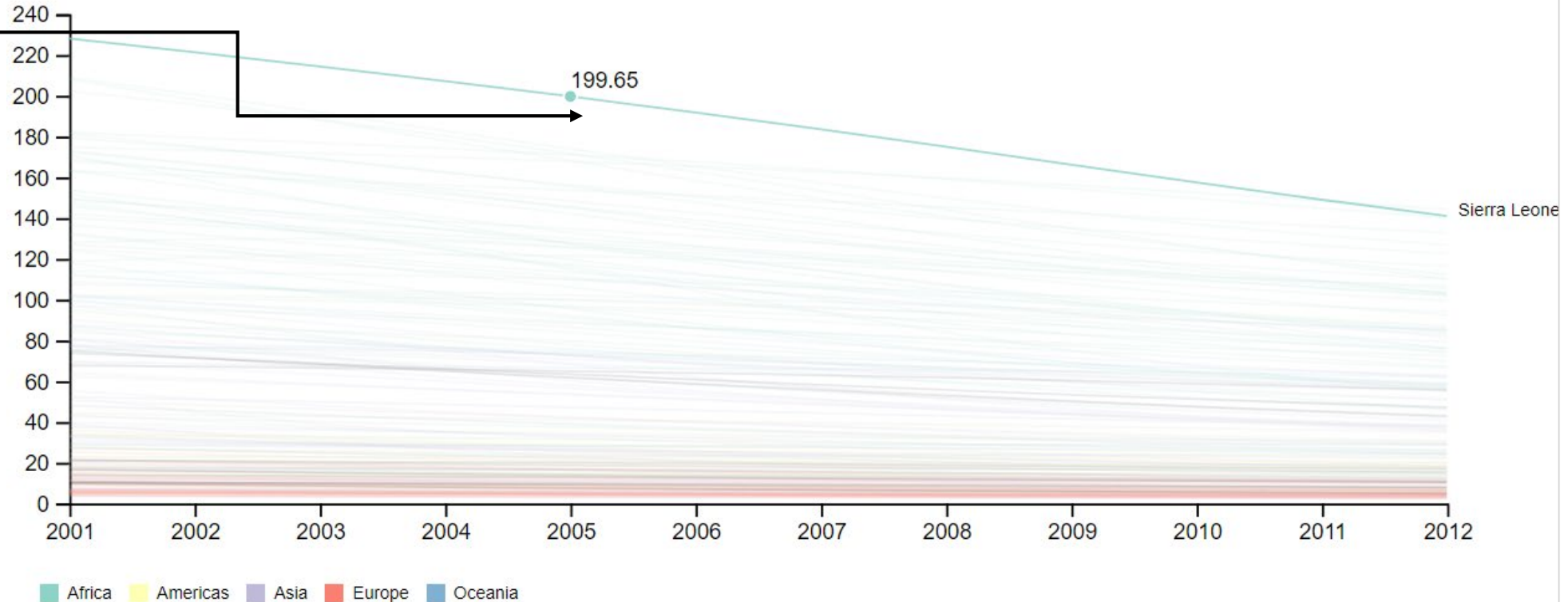
Views



Compare

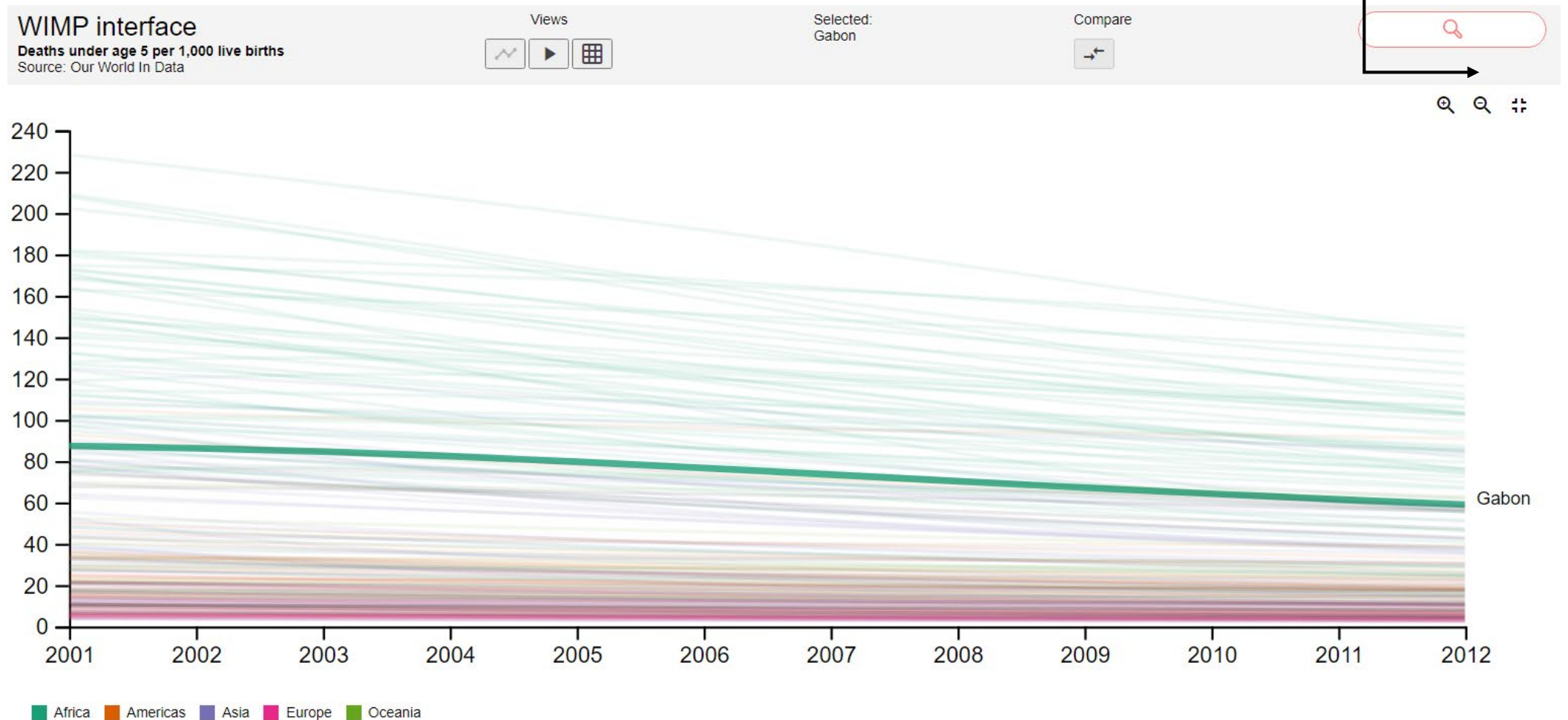


Hover with the mouse over a line to see the values of that country for the closest year



# Multi-line chart

You can also zoom in or zoom out with your mouse wheel or with the buttons



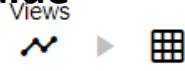


# Animated map

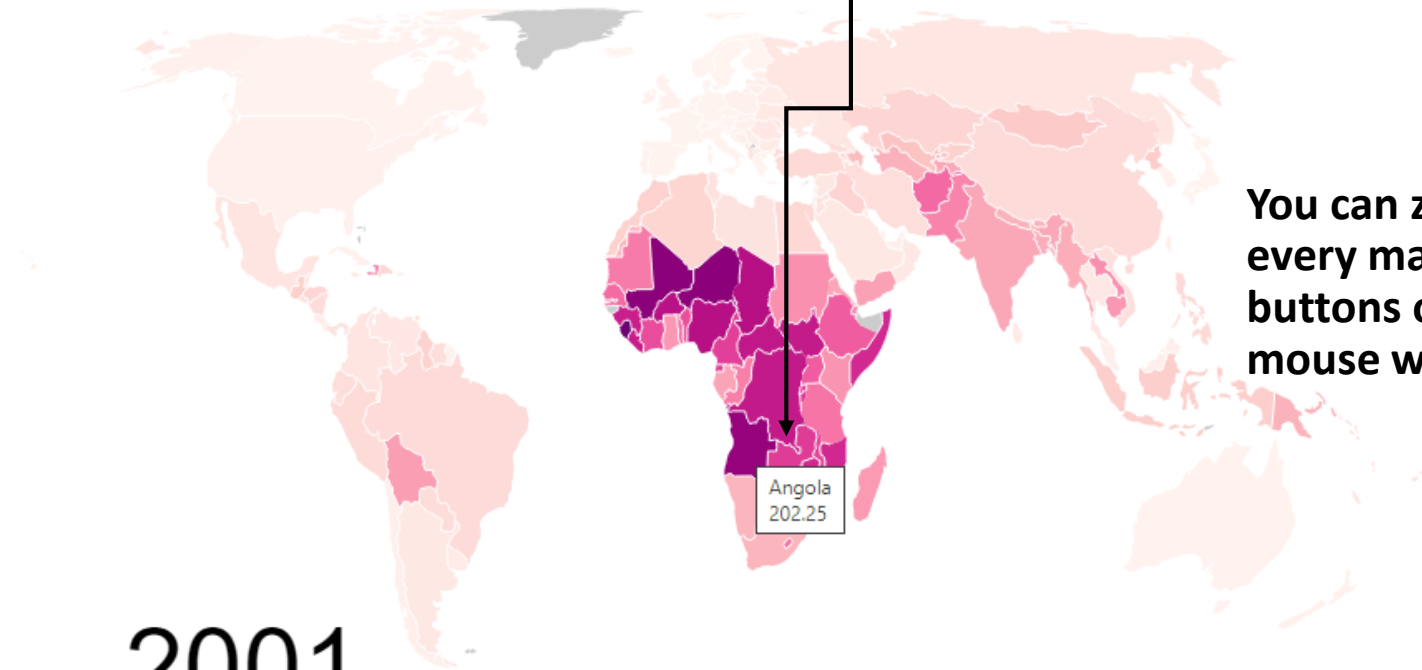
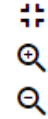
WIMP interface

Deaths under age 5 per 1,000 live births  
Source: Our World In Data

Hover on a country to see its  
value



Compare  
↔



Use the play button and  
slider to see the values  
change over time

You can zoom on  
every map with the  
buttons or the  
mouse wheel

2001



# Small multiples

Click on compare button  
and choose 2 years to  
compare

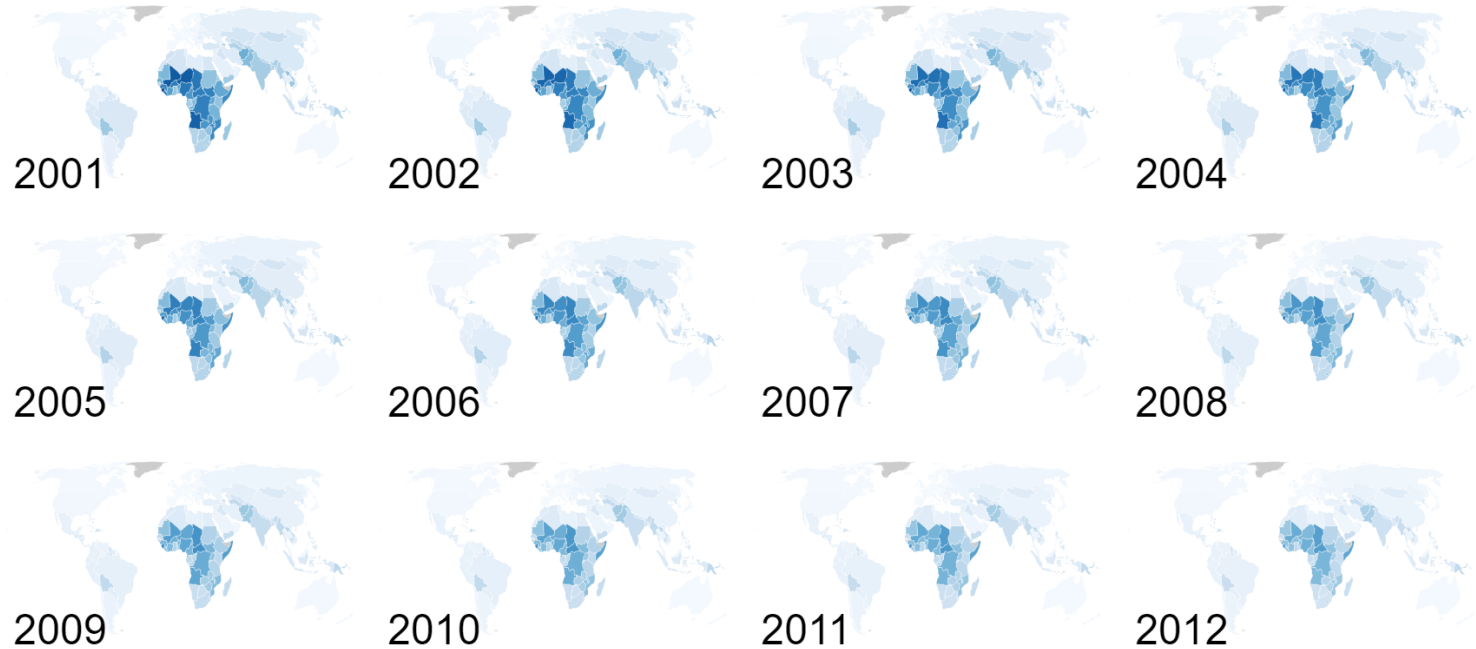
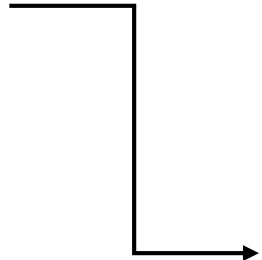
Delta Maps  
Deaths under age 5 per 1,000 live births  
Source: Our World In Data

Views  
[Line icon] [Grid icon]

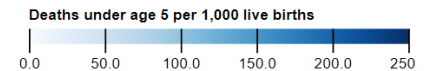
Compare  
[Compare icon]



Tap on a year to  
show the detail  
view of that year



Tip: Select a country to see values on the ruler.



# Detail view

Focus on 1 year

On any map, you can deselect all countries by clicking on an empty space

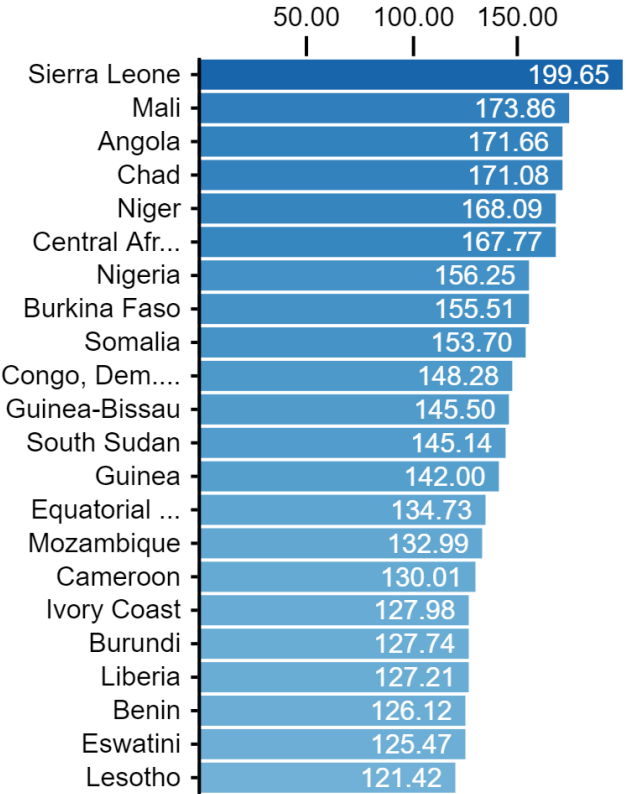
Delta Maps  
Deaths under age 5 per 1,000 live births  
Source: Our World In Data

Views 

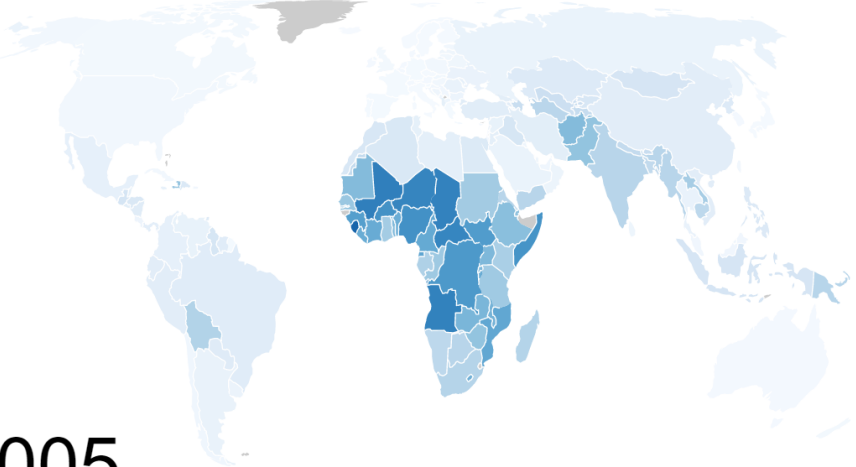
Compare 



Click on a bar to select that country



2005



X

You go back to the small multiples by clicking on the "X"



# Comparison view

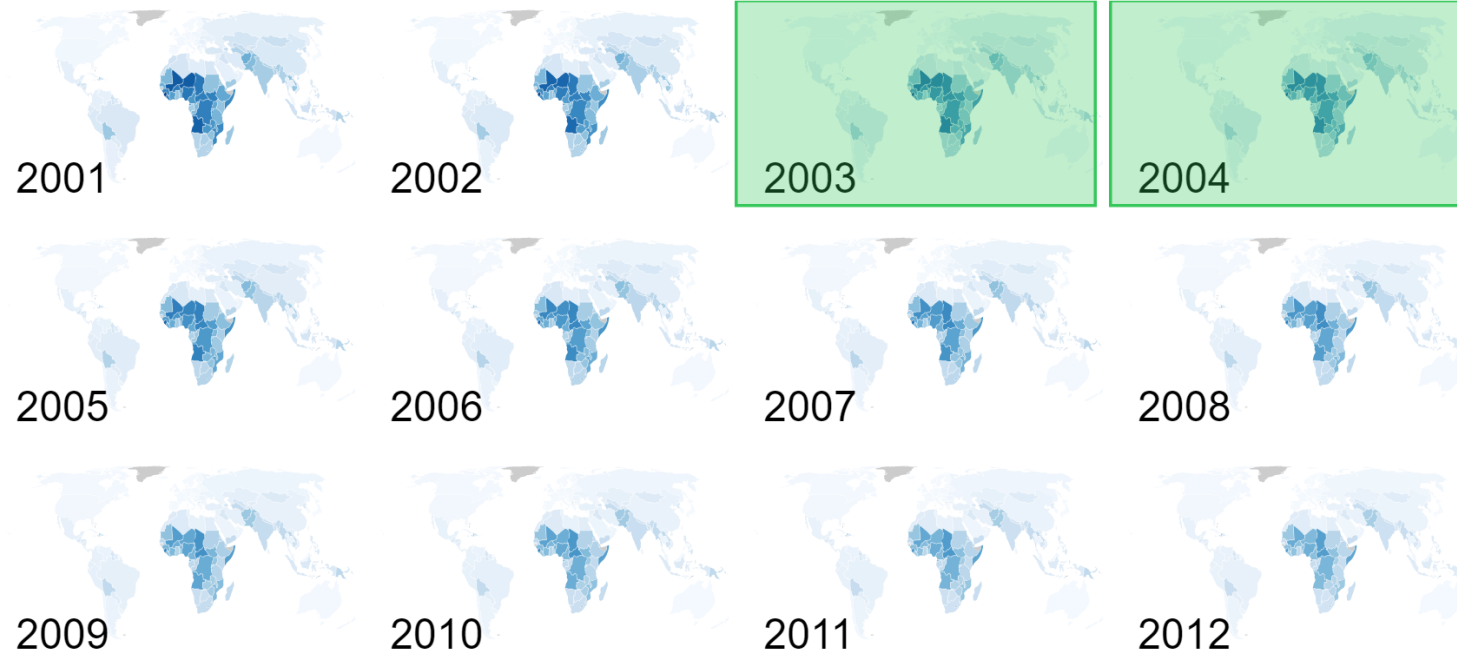
Focus on comparing 2 years

After clicking the compare button,  
select 2 years to compare

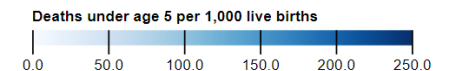
Delta Maps  
Deaths under age 5 per 1,000 live births  
Source: Our World In Data

Views  
↗ ▶

Compare  
← →  
Select 2 maps



Tip: Select a country to see values on the ruler.



# Comparison view

Focus on comparing 2 years

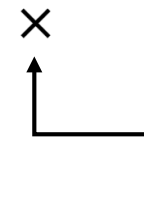
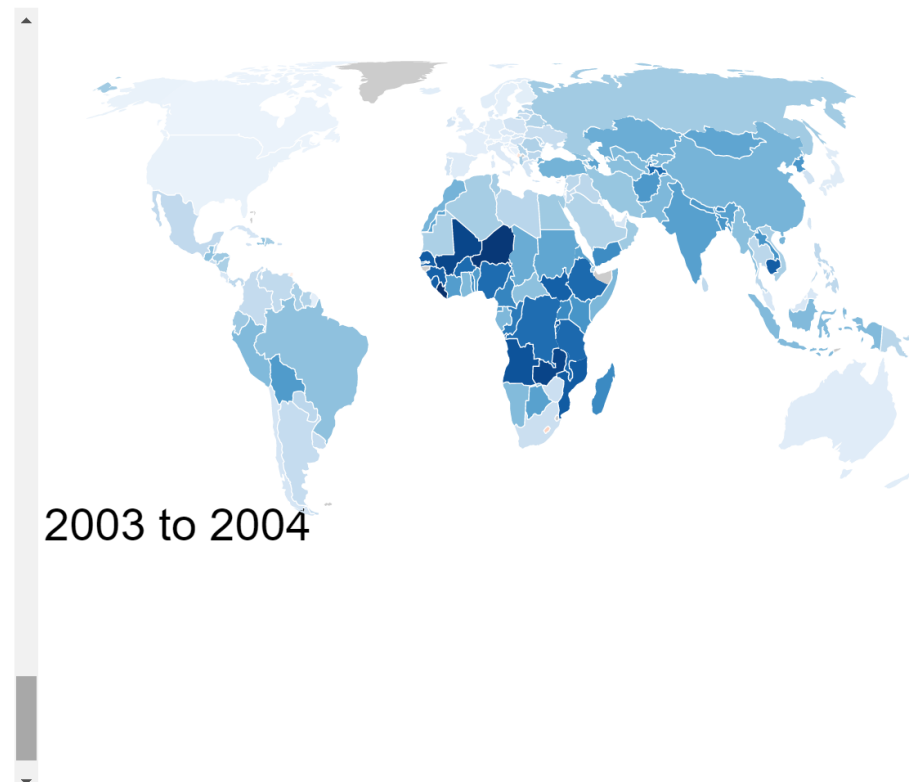
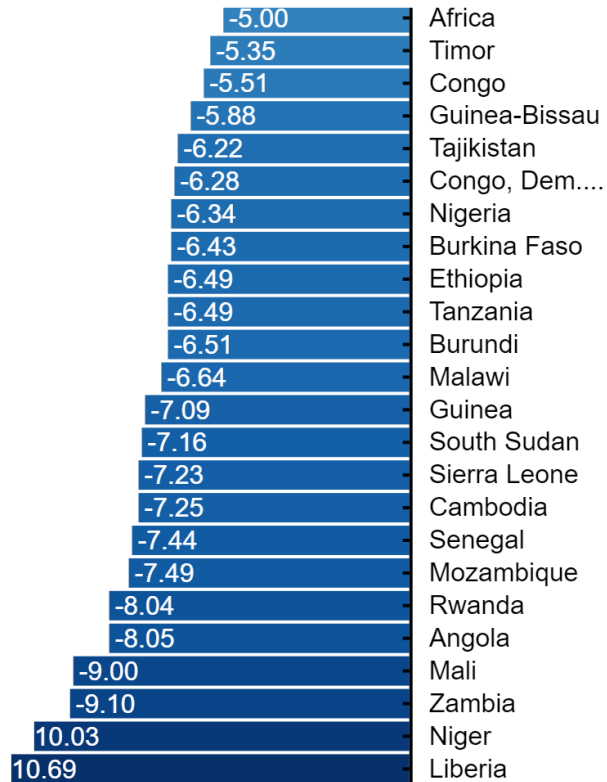
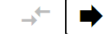
## Delta Maps

Deaths under age 5 per 1,000 live births  
Source: Our World In Data

Views



Compare



You go back to the small multiples by clicking on the "X"

You've reached the end of the introduction.

Please take 5 minutes to explore the interface on your own.